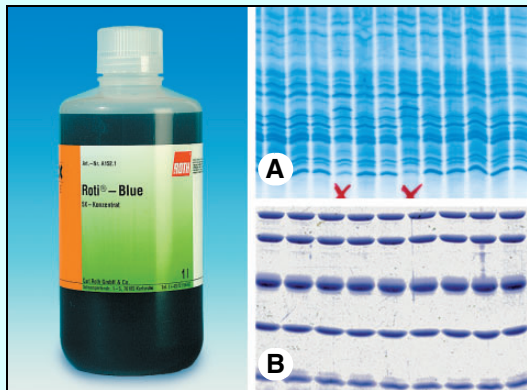




# PROTEIN GELS

## STAINING



**Figures:**

**A:** Horizontal IEF for determination of wheat-varieties.  
With kind permission of R. Knoblauch, LTZ Referat 23, Karlsruhe.

**B:** SDS-PAGE Roti®-Mark Standard

### Roti®-Blue

5x concentrated  
Colloidal Coomassie staining for protein gels.  
Store at 18-30 °C

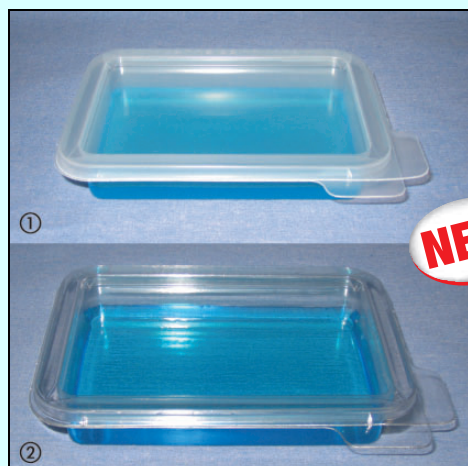


- No destaining necessary
- 5 x more sensitive than coomassie R250

Roti®-Blue is a colloidal coomassie brilliant blue G250 staining agent for proteins in polyacrylamid gels. Its colloidal features enable the staining agent to be bound to the proteins with high specificity and only minimally to the gel matrix. There is no longer any need for the extensive washing steps for background decoloring. Roti®-Blue is approximately 5 x more sensitive than standard coomassie staining solutions. Staining time takes 2 to 12 hours depending on the desired band intensity. Due to the fact that proteins may be stained without fixing the gel, membrane transfer and gel elution are still possible following staining. **Particularly well suited for staining prior to MS-analyses (e.g. MALDI) and prior to gel elution.**

1 l concentrate is sufficient for 50 mini gels (5 x 8 cm, 1 mm thick).

<b>A152.2</b>	250 ml	plastic		25,80 €
<b>A152.1</b>	1 l	plastic		77,70 €



**NEW**

### Gel Staining Trays

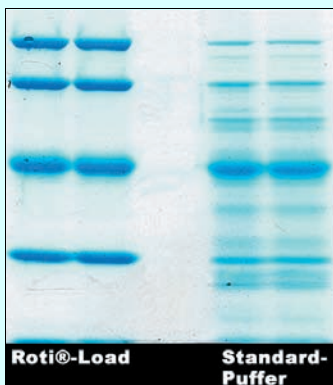
**Compatible with all standard staining methods.**

The staining trays, available in two sizes, are a practical and cheap alternative to plastic household bowls. The trays are compatible with all standard staining methods and thanks to the tightly-sealing, recessed lids, can be stacked safely and without slipping on the shaker. The asymmetric array of the marking on the edges and drainage outlets on all corners guarantee easy handling and simple orientation of gel.

① The **PP** (polypropylene) bowls are heat-resistant (autoclavable), **microwave-proof** and excellent for staining protein/peptide gels.

② The **PETG** (polyethyleneterephthalate) bowls have a clear, **UV-permeable bottom** for fluorescence staining of agarose gels (wave length  $\geq 330$  nm).

Type	Material	Dimensions H x L x W (mm)	Art. No.	Pack Qty.	€
MINI	PP	113 x 75 x 25	<b>CP57.1</b>	20	66,65
MIDI	PP	143 x 100 x 25	<b>CP58.1</b>	20	84,65
MINI	PETG	113 x 75 x 25	<b>CP59.1</b>	20	66,65
MIDI	PETG	143 x 100 x 25	<b>CP60.1</b>	20	84,65

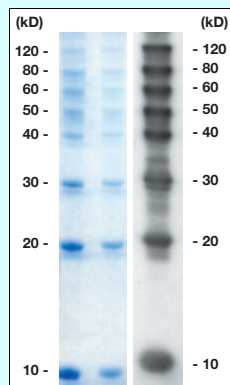


**Roti®-Load 2 (non-reducing)** represents a special gel loading buffer for protein gel electrophoresis. It has been designed to protect your proteins during sample preparation and to stabilise sensitive peptide bonds. Protein degradation is efficiently prevented by the 4x concentrated ready-to-use solution, which may be used directly for sample loading.

## Roti®-Load 2

**non-reducing, 4x conc.**  
Protein gel loading buffer  
Store at +20 °C

K930.1	10 ml	glass	12,80 €
--------	-------	-------	---------



## Roti®-Mark WESTERN Set

**TIP**

**ready-to-use**

Set of protein marker and antibody for gel and Western-Blot

**Size range: 10-120 kD**

**Number of fragments: 8**

**Number of lanes: approx. 100 or 10 (mini gels)**

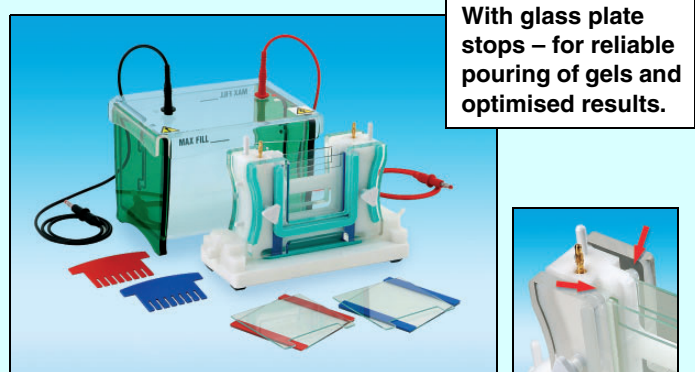
Store at -20 °C

Finely graded protein marker for medium size range and for detection in gel and on the Western-Blot membrane. The marker itself consists of unstained proteins and therefore enables correct size evaluation in gel (left figure). The marker-specific antibody Roti®-Mark WESTERN HRP-conjugate (rabbit) enables the marker to be detected directly in Western-Blot and stained through chemoluminescence or colour reaction. Antibody incubation is performed in parallel with the incubation of your protein-specific antibodies and therefore saves any additional work and expense. The marker bands are also automatically stained (right figure) during subsequent detection by horseradish-peroxidase. Consequently you will obtain the correct ladder size directly on your printout, X-ray film or membrane, ruling out the possibility of any errors through inaccurate transfer of the bands. Marker proteins are solubilised in a non-reducing buffer acc. to Lämmli. Roti®-Mark WESTERN Marker can be bought separately under Art. No. 0948.1 and Roti®-Mark WESTERN HRP conjugate under Art. No. 0949.1.

**Left hand fig.:** 12 % minigel, 10 µl and 5 µl marker solution, respectively.  
**Right hand fig.:** Chemoluminescence detection via Roti-Lumin, Art. No. P078.1. Proteins were run in a 12 % minigel and transferred onto a Roti® PVDF-Membran. 5 µl Roti®-Mark WESTERN Marker and Roti®-Mark WESTERN HRP conjugate diluted by 1:2.500.

The delivery comes uncooled.

0947.2	1 Mini set	26,65 €
0947.1	1 Set	217,00 €



## MINI Vertical Dual Plate Electrophoresis Unit

**Glass plates: 10 x 10 cm**  
**Max. sample capacity per gel: 20**  
**Buffer volume: 100 ml / 1000 ml**

**Delivery includes:**

1 vertical electrophoresis chamber including buffer tank, lid and cables,  
1 running module for simultaneous electrophoresis with two gels.  
The chamber is available in the standard or coolable version.

**Accessories included with models Y001.1 and Y002.1:**

2 glass plates, 2 separate spacer pairs (spacer thickness 1 mm), 2 notched glass plates, 1 dummy plate (for electrophoresis with one gel only),  
2 combs (12 teeth, 1 mm thick), gel casting module.

**Y003.1 and Y004.1:** without gel casting module.

**Standard,** with buffer tank, running module, gel casting module and accessories.

Art. No.	Pack Qty.	€
Y001.1	1	736,40

**Coolable,** with buffer tank, running module, gel casting module and accessories.

Art. No.	Pack Qty.	€
Y002.1	1	858,95

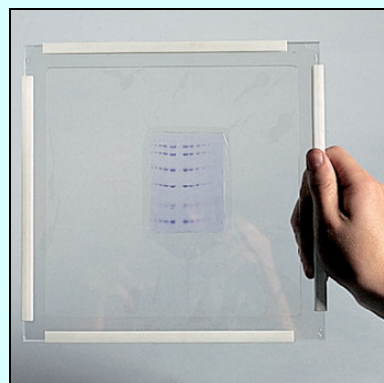
**Standard, without gel casting module,** with buffer tank, running module and accessories.

Art. No.	Pack Qty.	€
Y003.1	1	602,00

**Coolable, without gel casting module,** with buffer tank, running module and accessories.

Art. No.	Pack Qty.	€
Y004.1	1	714,15

• Accessories for the MINI Vertical Dual Plate Electrophoresis Unit can be found in the main catalogue starting from page 867.



## Gel Drying Frames

For easy drying of gels between 2 cellophane papers.  
Enables drying of gels without heat or vacuum.  
Each set contains 2 frames, 2 backs, 8 clamps and 50 cellophane sheets.

**MINI gel drying frames, size 14 x 14 cm (overall), 11.7 x 11.7 cm (cutout)**

Type	Art. No.	Pack Qty.	€
MINI-Set	K420.1	1 set	95,70
Spare clamps for frame MINI	T826.1	4 clamps	10,95
Spare pack of cellophane MINI	K422.1	50 sheets	17,10

**MAXI gel drying frames, size 24 x 24 cm (overall), 22.5 x 22.5 cm (cutout)**

Type	Art. No.	Pack Qty.	€
MAXI-Set	K421.1	1 set	150,45
Spare clamps for frame MAXI	T827.1	4 clamps	10,95
Spare pack of cellophane MAXI	K423.1	50 sheets	23,25

**Carl Roth GmbH + Co. KG**

Tel: +49 (0)721 5606-0 • Fax: +49 (0)721 5606-149 • Schoemperlenstrasse 3-5 • D-76185 Karlsruhe • www.carlroth.com