

# Roti®-Prep Plasmid

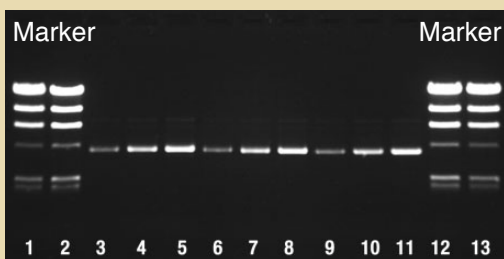
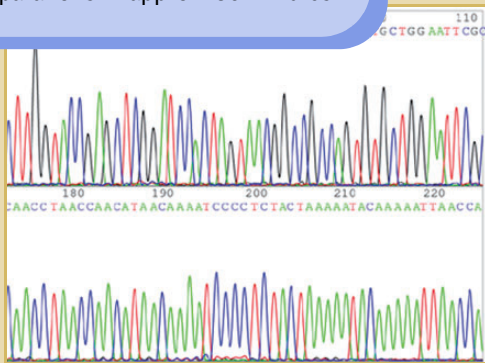


- Preparations in well-known mini-column system
- Fast, easy and efficient
- For all plasmids and cosmids of up to 10 kb
- New and highly efficient silica-gel membrane absorption technique
- Up to 20 µg highly pure DNA that may be directly applied to restriction digests, sequencing etc.
- 12 preparations in approx. 30 minutes



**NEW**  
at Roth

**For fast and simple isolation of plasmid and cosmid DNA from recombinant bacteria.**



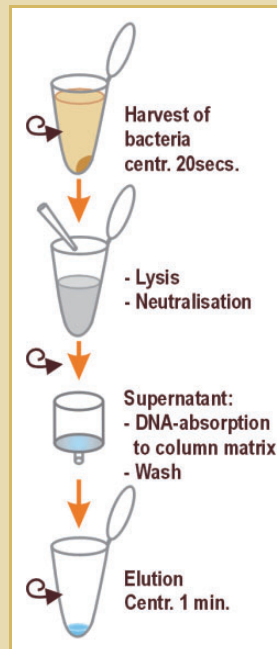
The figure depicts DNA of a 4 kb plasmid isolated by three equivalent kits (competitor "I", Roti®-Prep Plasmid and competitor "II")  
 Lane 1, 2, 12, 13: Lambda *Hind* III Marker 500 and 750 ng, respectively  
 Lane 3, 4, 5: Kit competitor "I", 3 / 6 / 9 µl (1:10 dilution)  
 Lane 6, 7, 8: Roti®-Prep Plasmid, 3 / 6 / 9 µl (1:10 dilution)  
 Lane 9, 10, 11: Kit competitor "II", 3 / 6 / 9 µl (1:10 dilution)

☒n R: 20/21/22-36/38-42-52/53 · S: 13-22-26-36/37/39-45-61

HP29.3	5 assays (testing kit)	14,75 €
HP29.1	50 assays	55,55 €
HP29.2	250 assays	221,45 €

## Roti®-Prep Plasmid Replacement Columns

2929.1	25 pieces	16,90 €
--------	-----------	---------



Roti®-Prep Plasmid Kit has been established for simple isolation of DNA from bacteria via alkaline lysis followed by column-mediated purification of DNA.

Through highly efficient and DNA-specific absorption to **silica-gel membranes**, a reliable amount of very pure DNA is obtained, independently of the vector system or bacterial strain used.

DNA isolated by Roti®-Prep Plasmid Kit is free of RNA and protein contaminations and may directly be applied to all standard down-stream applications like restriction digestion, sequencing, transcription, transfection etc.

### Kit content:

RNAse A, Resuspension Buffer, Lysis Buffer, Neutralisation Buffer, Washing Buffer, Elution Buffer, spin columns (5/50/250), 2 ml collection tubes (5/50/250), detailed instructions-for-use.

**Including detailed instructions-for-use!**

